

# Jam SE

The Music Player Remote Control

© 2006-2008  
Winfried Klum  
V1.3 **BETA**

## Overview

JAM SE is a free mobile application for a range of Java enabled mobile phones that allows you to control your music collection from your phone, using Bluetooth.

JAM SE requires a Server supporting the Bemused Protocol and a PC with a Bluetooth adapter. Browse or search your music collection on your phone, play most files supported by your music player including MP3s, CDs, etc.

Control your music player. Pause, stop, rewind, forward your playlist, add songs to the playlist, use shuffle and repeat and control the volume of your player.

Browse and select songs in your playlist, download songs to your phone, customize the look of your application with skins.

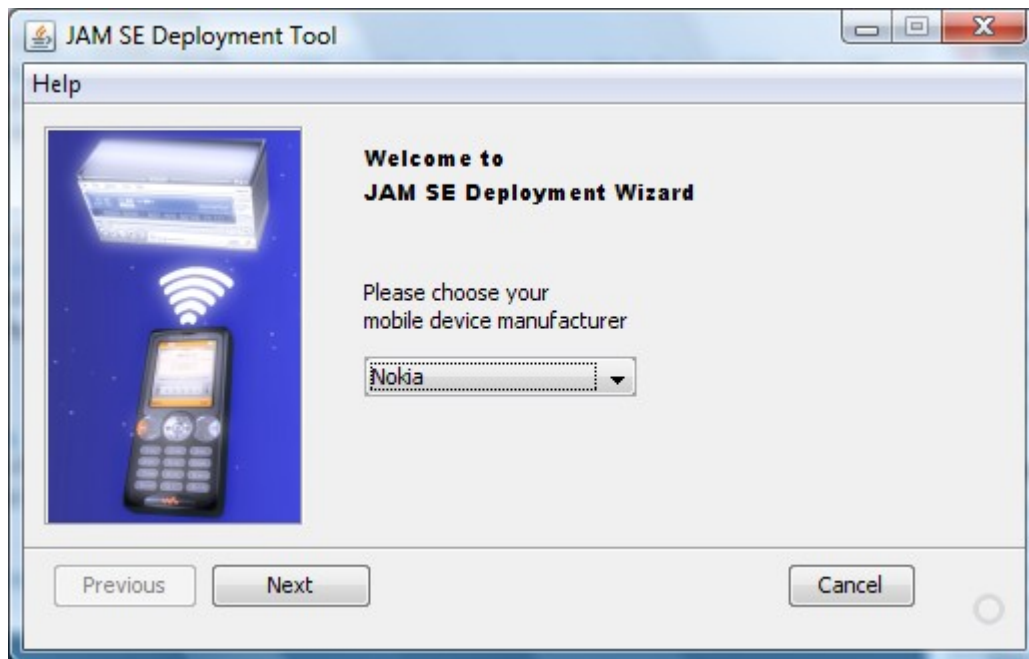
## JAM SE Installation

### *Jam SE Server Installation*

The JAM SE Server Installer contains Server, Mobile Installer, and the jIGUI Music Player.

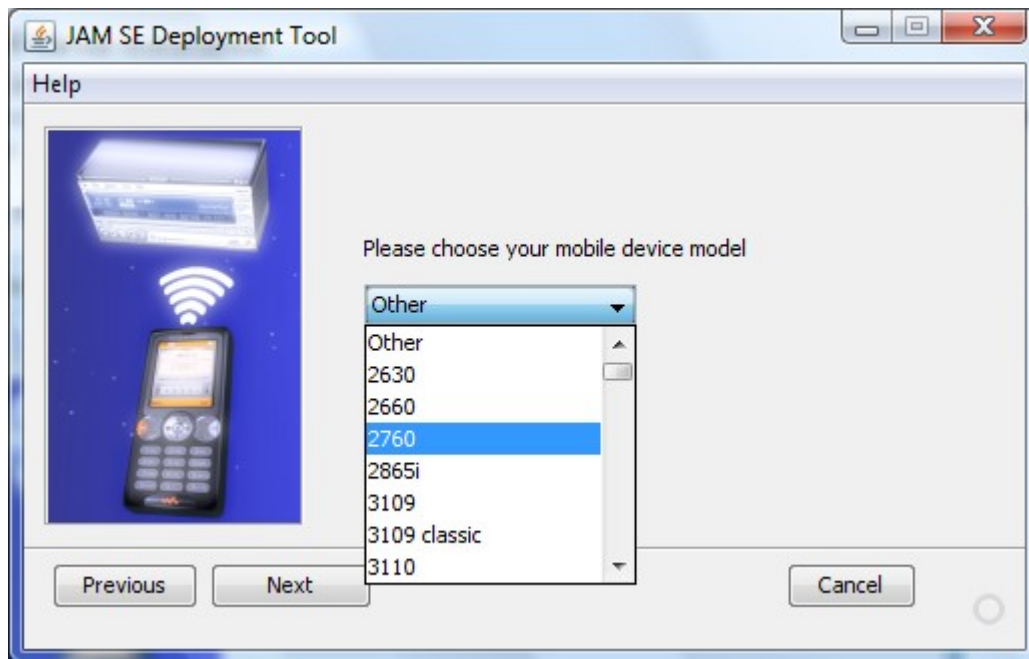
There is no need to configure the setup. After installation you can deploy JAM SE to your phone using the Mobile Installer.

### **Mobile Installer**

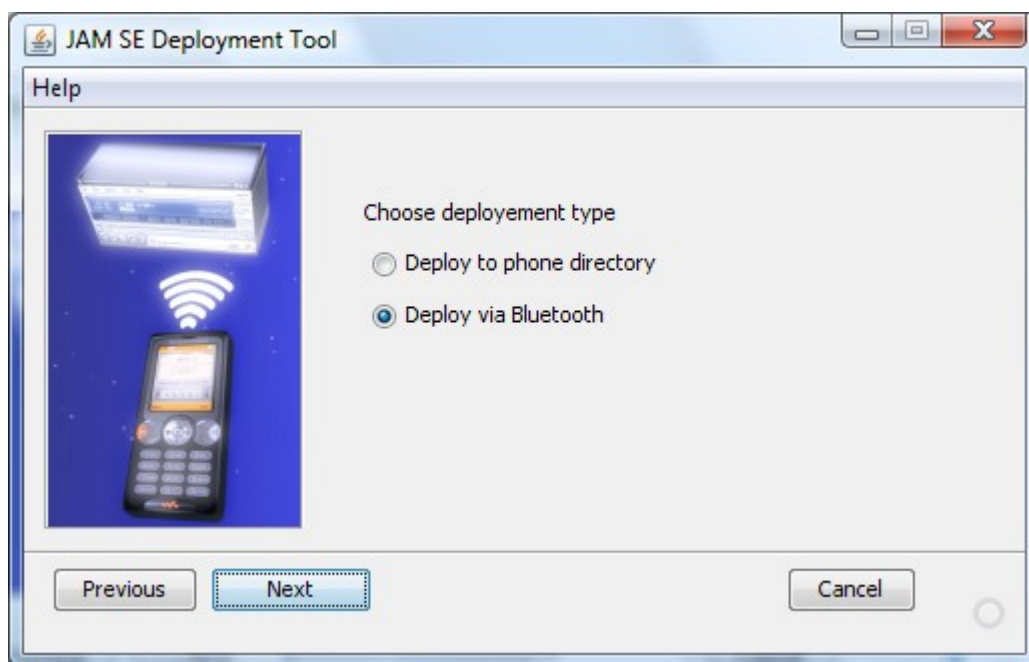


From the drop down box you can choose your phone manufacturer. If your manufacturer is not listed use the 'Other' option.

**IMPORTANT:** *If you have already installed an older version of JAM SE, please make sure that you delete the old version from your phone prior to installation.*



On the next wizard page you can choose your model. If you choose 'Other' you can choose a GENERIC version of JAM SE by screen size.



You can choose between two deployment types. Bluetooth deployment is the easiest way to install JAM SE on your phone. Deployment to the phone directory presumes a cable connection between your PC and your mobile phone. Using the phone directory deployment you have to choose the correct installation directory on your phone by navigating to mounted phone directory.

## Deployment without Mobile Installer

### *Sony Ericsson Phones*

To install the software on your memory card:

Transfer the 'JAMSE.jar' file to the directory '\mssemc\media files\other' in the mobile phone's files system. From the phone's main menu select File manager (Data folder) and browse to the application in the 'other' directory. Select **Install** to install the software on the phone.

### *Nokia Phones*

To install the software on a Nokia phone you can use the Nokia PC Suite (Version 6.80.21 or higher). Choose 'Install Software'. After installation the application menu on your phone must be reopened to show the new application.

### *Other Phones*

Please refer to your phone manual for installation instructions.

### **Additional Setup procedure for Nokia Phones**

To be able to download files to your Nokia phone you have to set file read/write permissions on your phone.

On Series 40, go to "Menu/Applications/". Highlight 'jamse' application name, go to "Options/Application access", and configure the proper permissions.

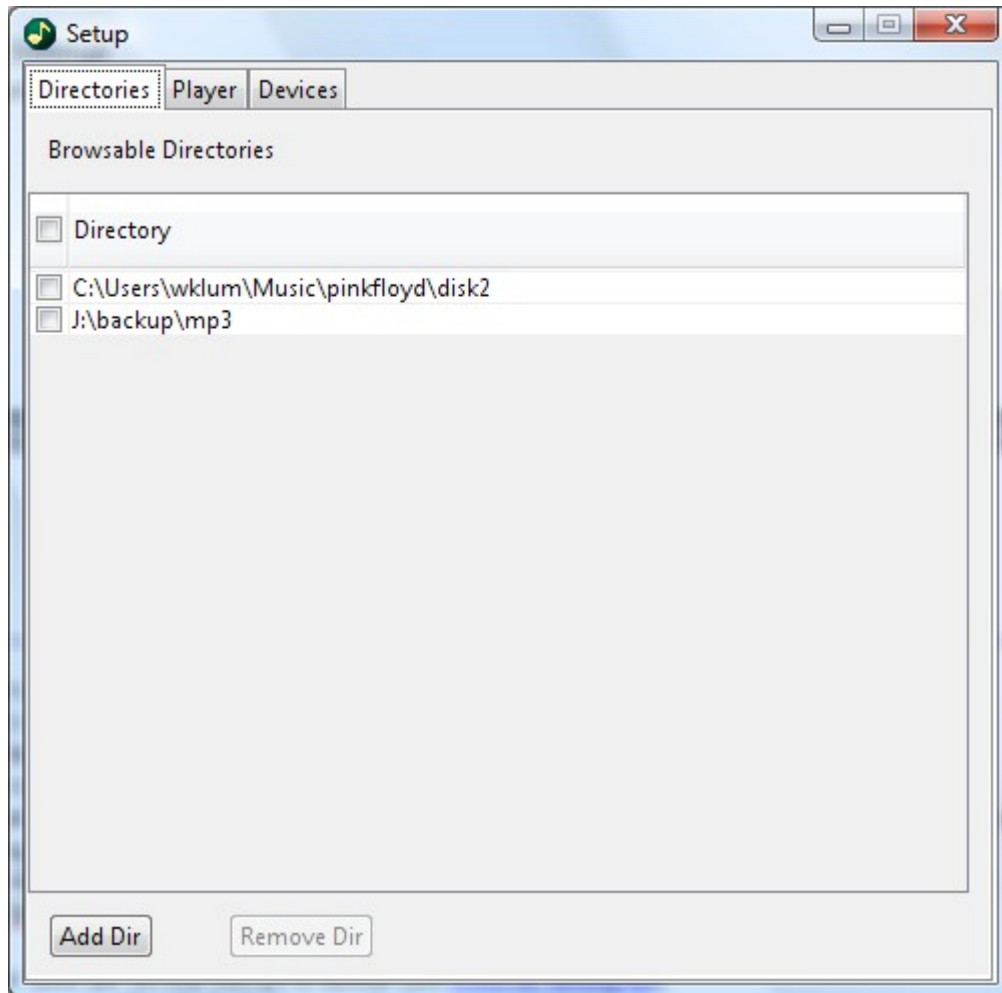
On S60, go to "Tools/App. Manager/". Highlight 'jamse' application's name, go to "Options/Suite Settings", and configure the proper permissions.

Please note that the default access rights do not allow for file read/write access, you have to manually change them. If the permissions are correctly configured you will still get security prompts.

## Server Setup

Click the right mouse button over the server icon in the tray bar to open the Server Setup dialog.

In the Directories tab you can set your music file directories that you want to access from your mobile phone.



**IMPORTANT:** *If you choose too many directories (files) JAM SE might not be able to download the whole directory structure because of limited memory on your mobile phone. Under some circumstances JAM SE might even crash.*

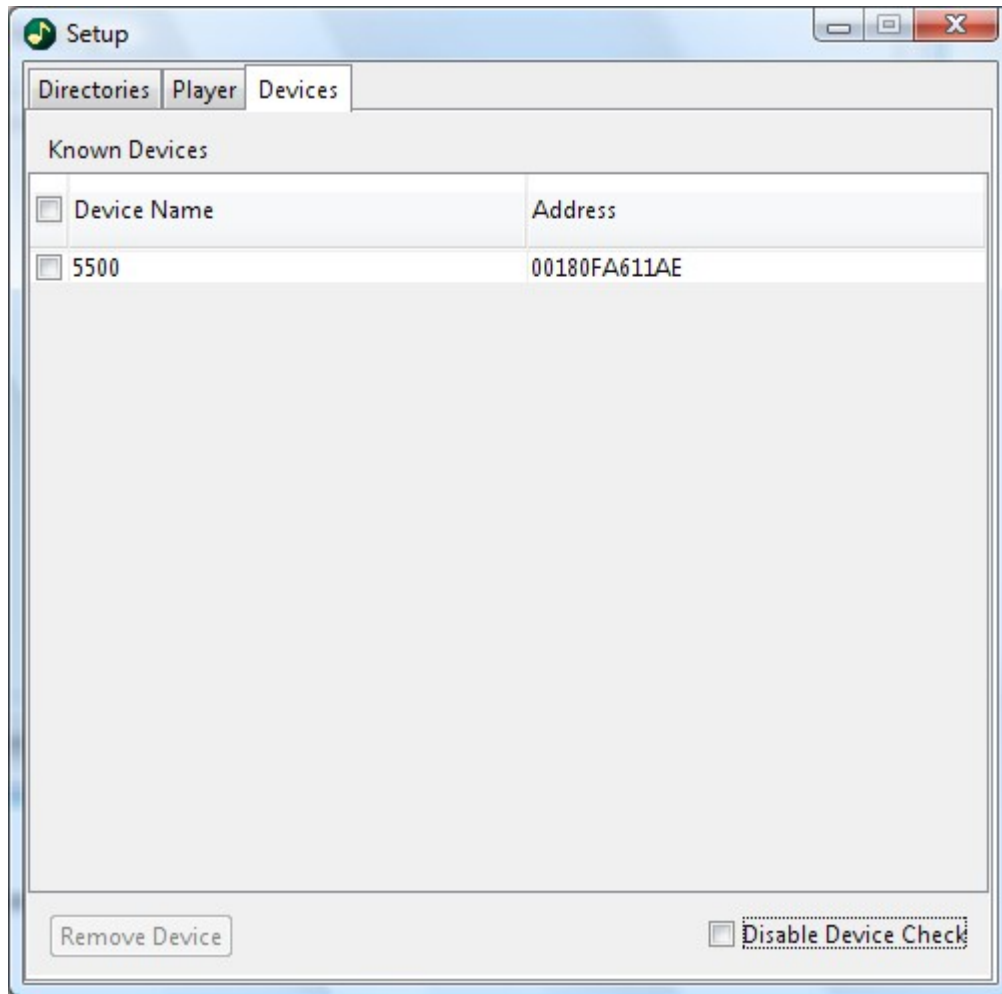
### Device Tab

From the Device Tab you can manage mobile phone access to your computer.

If a mobile phone connects for the first time a security dialog will pop up asking you for access allowance.

You can grant temporary or permanent access from the dialog window. If you grant permanent access the phone name and Bluetooth address will be saved.

You can also disable device check, this is not recommended because it will open your computer to unauthorized Bluetooth access.



There are also other Servers available for different OS types and music players.

Windows users can download the Bemused Server<sup>1</sup> with Winamp support.

Follow the server installation instructions (README file).

Make sure that you have configured your **Serial Port Profile** on your PC and that Bluetooth discovery is working properly.

Connect the server to the **incoming** Bluetooth serial port, ensure that there is only one incoming port configured.

Set your Bluetooth adapter to discoverable mode.

For Linux there are several Servers available (see [JAM SE homepage](http://jamse.sf.net)).

Have a look at the README file for installation.

---

<sup>1</sup> <http://jamse.sf.net> (Windows/Linux)

## First Startup

### Startup

1. Check that your Bluetooth adapter is working correctly, your Bluetooth adapter (on your PC) must be in **discoverable mode**. All non server Bluetooth RFCOMM services on your PC should be deactivated (at least for first startup).
2. Bluetooth on your phone must be switched on before you start JAM SE.
3. Make sure that your Server is up and running. JAM SE Server will signal correct startup with a 'Server Ready' message in the tray bar.
4. On first startup JAM SE will search for Bluetooth devices supporting the RFCOMM service. Device search may take some time to complete.
5. Select your PC from the device list, JAM SE will try to contact the server checking for a valid protocol.
6. Once the connection is set up the player control screen will show up on your phone.

## Mobile Application

### Player Control

Player volume and song data is continuously synchronized with the phone.

Depending on the Bluetooth adapter state it can take a few seconds for the phone to synchronize.

Some phone types (e.g. SE K750i) will disconnect after 2 minutes of inactivity to save battery power.

If you get a connection timeout you can immediately reconnect to the server by pressing the connect button from the **Disconnected** screen.

### Button Control

To control the player buttons you can use your phone joystick. Horizontal movement is selecting the player buttons. Menu Select or pressing the Joystick will activate the selected button.

*Note: On Nokia S40 phones you have to press the green phone button to activate a player button.*

### Volume Control

Vertical Joystick movement controls the volume setting of the player.

You can configure your keypad for player control (see shortcut menu).

## Main Menu

You can choose the main menu from the phone menu button. If you are in full screen mode just press your phone menu button to access the menu.

### **Playlist**

Simply download and display the player's actual playlist. From the playlist you can select a song, the player will immediately jump to the selected song and start playing.

### **Browse Dir**

Download and display the configured server directories. You can add selected files to the playlist or download music files or skins or download a stored playlist for preview and setup (*see also File Menu*).

### **Search**

This searches the configured server directories for files and other directories. You can use '\*' as a wild card character in the search string. The search is not case sensitive. From the search result list you can use the normal file sub menus by selecting a file from the list.

### **Shortcuts**

From the 'Shortcuts' menu you can map your keyboard keys to a set of menu and player actions. There are also additional actions not accessible from the Main menu.

The 'Local Files' action can be used to list downloaded files or locally stored skin files. The download directory can be set in the Setup menu. The Debug action can be used to track down problems with the client or server application. The short cut list is pre set on installation.

### **Shuffle toggle**

Toggles the player shuffle setting.

### **Repeat toggle**

Toggles the player repeat setting.

### **Clear Playlist**

Clears the player playlist.

### **Switch Skin**

If you have downloaded a secondary skin you can switch between build-in and downloaded skin.

### **Screen Size**

Switch the screen size for your skin. In full screen mode the menu buttons will not be visible, so use skins that do fit your normal screen.

### **Setup**

Various application settings, see 'Setup Menu' for a detailed description.

### **Help**

Shows the Help dialogue.

### **Shut down PC**

You can shut down the PC from you phone. Please be aware that any unsaved data may be lost !



## Setup Menu

The Setup Menu is available from the Main Menu. From there you can set application configuration parameters.

### **Directory Caching**

Downloading directories from the server may be time consuming. To reduce time and load you can choose to cache the directory structure on your phone. Edit the 'Cache Time' value.

A value of '0' will pin your directory for the whole application session.

### **Background Color**

If you have downloaded a skin that doesn't fit the actual screen size you may see parts of the background screen. With the 'Background' setting you can select your desired background colour.

### **Song ticker on/off**

If the actual song name doesn't fit the screen and Song ticker setting is on, the file name will roll through your display (default on).

### **Text Input Style**

You can switch between predictive (T9 etc.) and non predictive input mode.

The input mode switch is currently only used in the search dialogue.

### **Backlight on/off**

Keeps the phones Backlight on for approximately 30 seconds. This feature uses a lot of battery power, so you should switch it off if you use the application quite often. This feature is not used by the GENERIC software packages.

### **Show Playlist Index on/off**

You can switch off the index numbers for the playlist entries, leaves more space for title entries.

### **Connect on Startup**

If set JAM SE will immediately try to contact the stored Server URL.

Security screens might still pop up.

### **Download Dir**

The download directory set for your phone. Please enter a valid storage location for your phone.

Be aware that some directories can't be accessed due to security constraints set for your phone.

JAM SE will try to set a valid directory on the first startup, this setting can be overwritten at any time.

The directory names might differ from the names that you will see on your build in file explorer.

### **Timeout (only available on distinct devices)**

If set to 'yes' your mobile phone will automatically disconnect from the server after 2 minutes of inactivity.

If you set timeout to 'no' your phone will stay connected to the server. Some mobile phones deactivate the Bluetooth unit after some time, this might lead to a freeze of the mobile application.

## File Menu

If you select a file from a search result list or 'Browse Dir' listing you can choose further file actions depending on the file type by selecting the file.

### Audio Files

If you select an audio file, you can choose to download the file to your phone, or to add the selected file or all audio files in the directory to the playlist. With the Direct Play action you can set the selected file for immediate play back. Selecting Direct Play will clear the existing playlist.



### Skin Files

If you select a skin file with the '.txt' or '.png' extension you can download the selected skin to your phone. Skins are only downloaded if the skin image and descriptor files are in the same directory. Please make sure that the skin fits the screen size of your phone. You can also use the 'Local Files' action from the shortcut menu to load skin files stored on your phone.

### Playlist Files

Most Audio Players are able to store a playlist collection in a playlist file with a '.m3u' extension. If you select a playlist file, the file will be downloaded to your phone and you will be able to preview/upload and edit the playlist file. Editing the playlist File from your phone will not change the original file on the server.  
*(Only m3u playlists with absolute filepath entries will work for playlist upload)*

## Page Mode

JAM SE supports long lists by automatically breaking down the list into pages. For quick page navigation you can use the  >> and  << buttons. Page mode is automatically switched on for lists with more than 40 entries.

### Tip for quick list navigation

Many phones support list looping. If you want to go to the next page and you are at the beginning of the page you can simply go back (list up) to reach the **next page** symbol.

## Supported screen formats

The following screen formats are currently supported:

Screen Resolution
128x128 px
128x160 px
178x220 px
208x208 px
240x320 px

Please make sure that you have downloaded the correct software package suitable for your phone(see<sup>2</sup>). For other screen sizes you will have to choose the next smaller screen size package. If the player screen doesn't fit your screen size you can use the 'Screen Size' action from the Main menu to switch to full screen mode.

---

<sup>2</sup><http://jamse.sf.net>

---

## Creating Skins

Using your favorite graphics software you can easily create a skin for your phone.

See the 'Writing Skins' document in the Bemused Server documentation for further details.

The JAM SE skins have slightly different definitions.

In the skin descriptor file you have to add the skin size, that is the displayed proportion of your skin.

On a typical 176 x 220 pixel phone display, in normal screen mode (menu buttons showing up) you will have up to 176 x176 pixels for your skin.

With these settings add the following line to the skin descriptor file:

Screen with menu buttons(width=176,height=176):

**SkinSize: 176 176<sup>3</sup>**

Full screen without menu buttons (width=176,height=220):

**SkinSize: 176 220<sup>4</sup>**

### Skin Download

Once you are finished with your skin, place the skin files in one of the configured server directories.

From the phone **Player Menu** select Browse Dir. Go to a skin file and press select. The Skin Menu will pop up from there you can select **Install Skin**.

The skin will be stored on your phone and is displayed in the player control. From the Player Menu you can switch skins and choose full screen or menu screen mode.

You can even install original Bemused Skins.

If you have created a great looking skin and you want to share it with the community, send your skin to [jamseinfo@aol.com](mailto:jamseinfo@aol.com) we will try to bundle it with the next release.

---

<sup>3</sup>Please note the space between the numbers

<sup>4</sup>Please note the space between the numbers

## Technical Data

### ***JAM SE supports new Symbian phone type (Java application)***

A client for older Symbian phones can be downloaded from the Bemused Server page<sup>5</sup>.

### ***Music file download***

The following music file extensions are recognized for download:

**wav aac mp3 mp2 wma ram emy imy amr mid xmf dls rmf au m4a ogg ape mpc flac**

Make sure that your phone supports the downloaded file format.

Music files are downloaded to the local directory set in Download Dir (see Setup menu).

Downloading will be aborted if the file name already exists.

### ***Protocols***

JAM SE supports the Bemused Protocol over Bluetooth.

### ***Character Encoding***

JAM SE is supporting ISO-8859-1 character set only.

For help on Windows Vista setup please visit the [JAM SE homepage](#).

### ***Minimum Requirements***

Java enabled phones must at least support the following Java features in order to run JAM SE:

CLDC1.1
MIDP2.0 (or higher)
JSR-82 Bluetooth
JSR-75 File API

---

<sup>5</sup> <http://jamse.sf.net>

## Troubleshooting Guide

### **Generic Packages**

If your phone is not explicitly listed in the 'Supported Phones' table on the product homepage, you can try a GENERIC package. Make sure that your phone screen resolution matches the GENERIC package that you want to install. File Download may not work for your phone if you are using a GENERIC package. The Backlight feature is not working for the GENERIC packages.

### **Windows XP Bluetooth Driver**

There are many reports of Bluetooth problems with the standard Windows XP Bluetooth Stack. If you encounter connection problems, try to change to different Bluetooth Stack (e.g. Widcomm).

### **Bemused Linux Server**

The original Bemused Linux Server supports the outdated XMMS Audio Player. Unfortunately this player has some serious bugs in its remote API. A patched version for the Audacious Audio Player (a XMMS fork) can be downloaded from the JAM SE Homepage.

### **Empty playlist bug on Linux**

XMMS and Audacious players freeze during playlist download if the playlist is empty. The KDE Bluetooth Module is currently in a BETA status, it is possible that some features may not work with JAM SE.

### **JAM SE is unable to find PC Bluetooth Adapter**

Make sure that Bluetooth on your phone is enabled. If you get a very short device search it's likely that Bluetooth on your phone is off, so before you start JAM SE go to your phone's Bluetooth settings and switch Bluetooth on. Make sure that BT on your PC is set to be visible. Pair with the PC by initiating the pairing from your phone, before you start JAM SE.

### **Mobile Phone Bluetooth Issues**

Some older SE phones need a software update to fix Bluetooth problems. You can get the required Software Updates directly from Sony Ericsson.<sup>6</sup> Some Nokia S40 phones seem to have a problem with Bluetooth device activation, it can take quite a long time until the device gets activated, **pressing the keyboard buttons seems to speed up device wake up time.**

### **Directory Size**

If you start browsing your server directories, all directory information will be downloaded to your phone. This can take quite a long time, depending on your directory settings. You can configure directory caching from the Setup Menu for faster browsing.

To ensure that your phone is not running out of memory, use only small size browse directories on your server.

**Help us to improve JAM SE !**

Please send your comments, feature requests, questions or bug reports to [jamseinfo@aol.com](mailto:jamseinfo@aol.com)

***We'd love to hear from you !***

---

<sup>6</sup> <http://www.sonyericsson.com>